



MICHELIN-
SCOTLAND
INNOVAT!ON
PARC



MICHELIN- SCOTLAND INNOVATION PARC

**A WORLD CLASS INNOVATION
PARC IN DUNDEE**
**FOR SUSTAINABLE MOBILITY
AND LOW CARBON ENERGY**



- Excellent infrastructure
- Advanced Skills Academy
- Support Packages
- Innovation expertise
- Green energy

An exciting and flexible 32ha
Physical Environment with
excellent infrastructure,
connectivity and space to grow

Advanced Manufacturing

- ❑ EV BATTERY MANUFACTURING
- ❑ EV MANUFACTURING
- ❑ HYDROGEN PRODUCTION
- ❑ HYDROGEN FUEL CELL VEHICLES
- ❑ WIND TURBINE COMPONENTS

75,000 m² fully appointed
Manufacturing Units

Innovation Hub

- ❑ 6,000M2 HUB, LABS & WORKSHOPS
- ❑ EV BATTERY TECHNOLOGY
- ❑ HYDROGEN & FUEL CELLS
- ❑ ELECTROLYSIS COMPONENTS
- ❑ SUSTAINABLE HEATING TECHNOLOGY
- ❑ BATTERY SUPPLY CHAIN
- ❑ LIGHTWEIGHT MATERIALS & COMPOSITES

Space and expertise to **Innovate** and prototype, backed up by partnerships with some of the best Colleges, Universities and Industry experts

Skills Academy

- ❑ **3,000M2 WORKSHOPS & TEACHING SPACE**
- ❑ **GENERAL TECHNICAL SKILLS**
- ❑ **AUTOMATION , AI, AR, DIGITAL & VR**
- ❑ **META SKILLS, COMMS, CREATIVITY**
- ❑ **BESPOKE PACKAGES FOR TENANTS**
- ❑ **HIGHER LEVELS UP TO MSC**
- ❑ **ALL WITH A MICHELIN CORE CONTENT**

Advanced **Skills Academy** developing the workforce of the future, delivering bespoke packages as well as core technical skills

Partnered by:

Sustainable Energy Sources

- ❑ *STEAM & ELECTRICITY FROM MEB (15MW & 10MW)*
- ❑ *ELECTRICITY FROM WIND TURBINES (4MW)*
- ❑ *ELECTRICITY FROM THE SOLAR ARRAY (1MW)*

Sustainable Energy supplied
from local sustainable sources
at competitive rates

MANUFACTURING

600

SKILLS
ACADEMY

10

ACCELERATOR
LABS

16

INNOVATION
HUBS & LABS

70

MSIP &
INCUBATOR UNITS

30

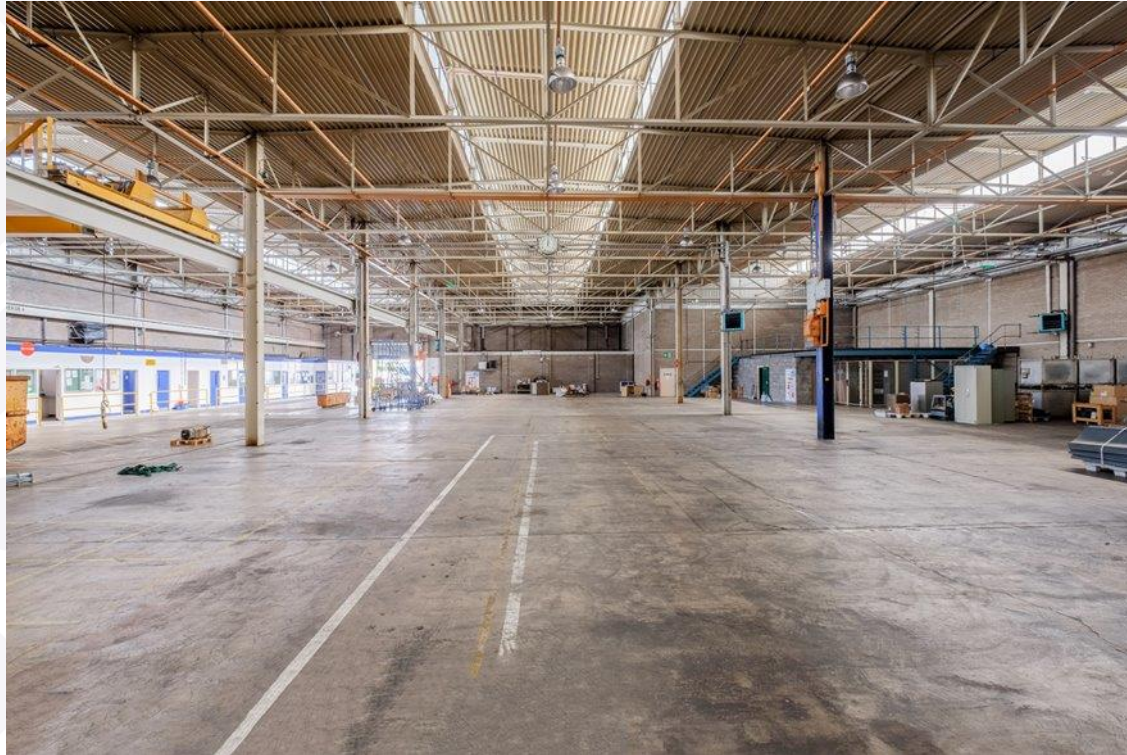
OTHER

65

800+ jobs

Decommissioning

Michelin equipment decommissioning nearing completion



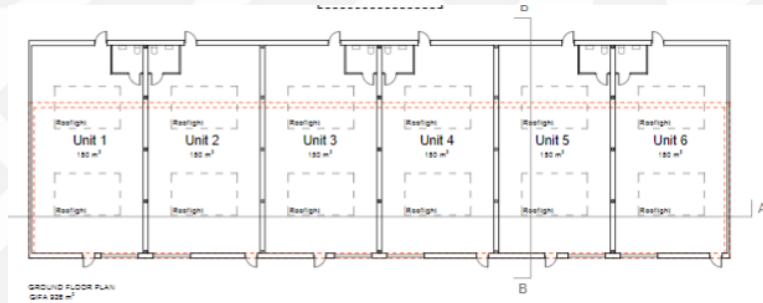
Demolition

- Significant progress already made
- All demolition complete by end 2020

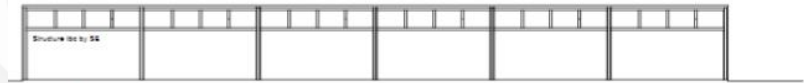


Transformation

Start-ups and SME build



Proposed GF new-build plan
1:200



Proposed A-A section
1:200



Proposed South elevation
1:200



Proposed North elevation
1:200



Proposed B-B section
1:200



Proposed West elevation
1:200

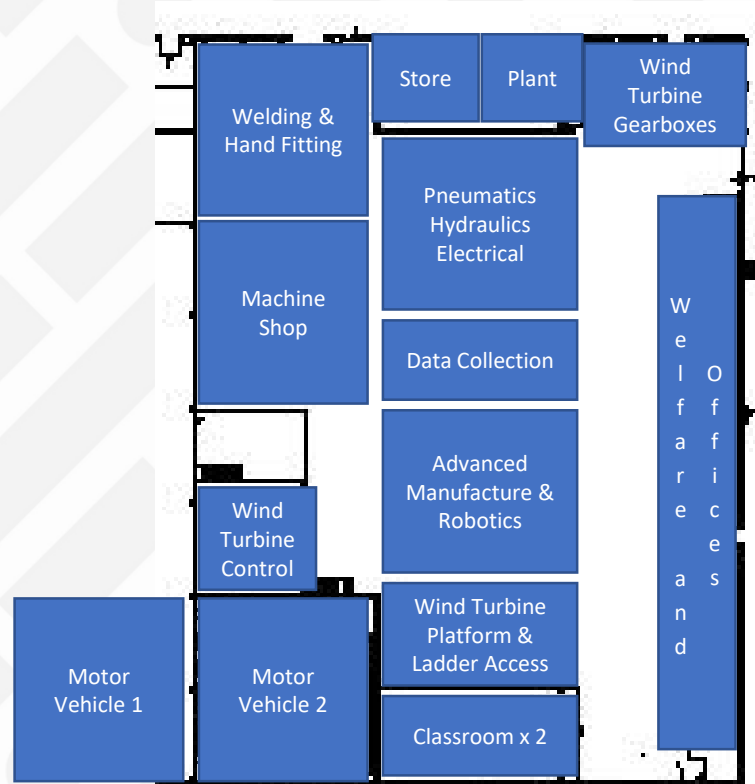


Proposed East elevation
1:200



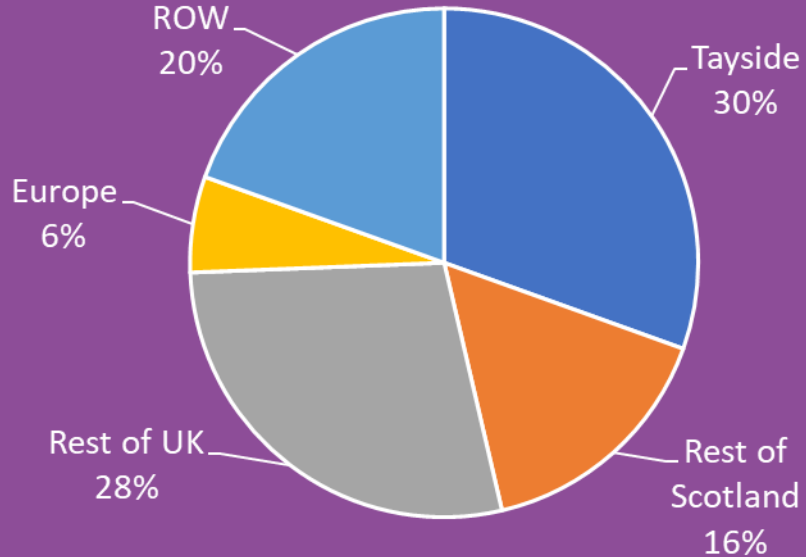
Transformation

Skills Academy preparation

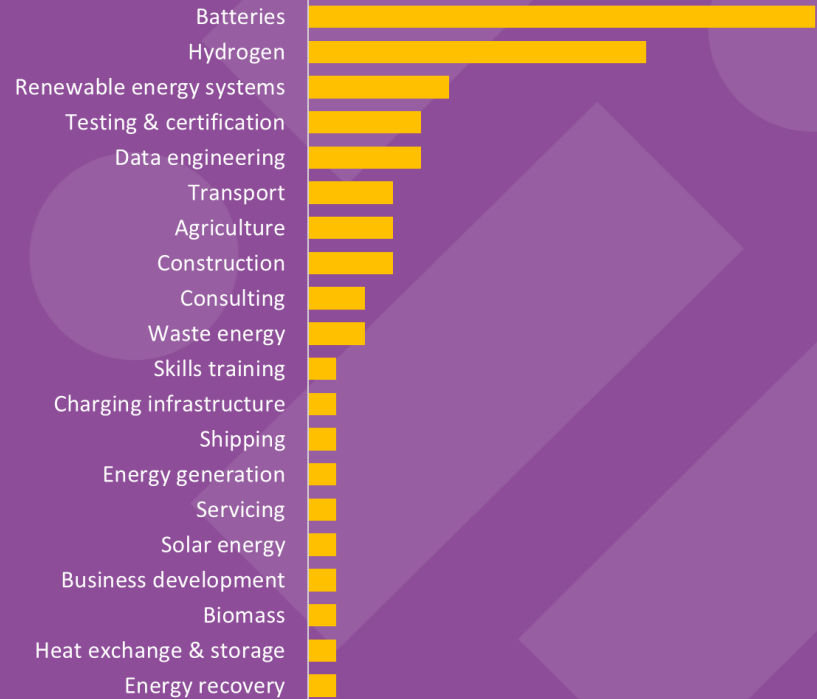


Tenant pipeline

By source location



By sector



Planning matters...

Demolition/repurposing considerations, especially industry ↔ campus cohabitation

Market dynamism and first mover advantage

Multiple investors, all with varying expectations, but certainty and confidence top of list

Integrating the new parc into the local community

Sustainable mobility transition – decarbonising transport, facilitating travel and accessibility

- Social rejection of non-sustainability
- Data & AI revolution
- Automated driving and electric powering
- Last mile delivery
- Increased assets utilization

Keep up to date with the latest MSIP news by following us on social media!

Twitter: @MSIPDundee



LinkedIn: Michelin Scotland Innovation Parc



Facebook: @MSIPDundee





MICHELIN-
SCOTLAND
INNOVAT!ON
PARC