



Southside
HOUSING ASSOCIATION

 **Raeburn
Farquhar
Bowen**

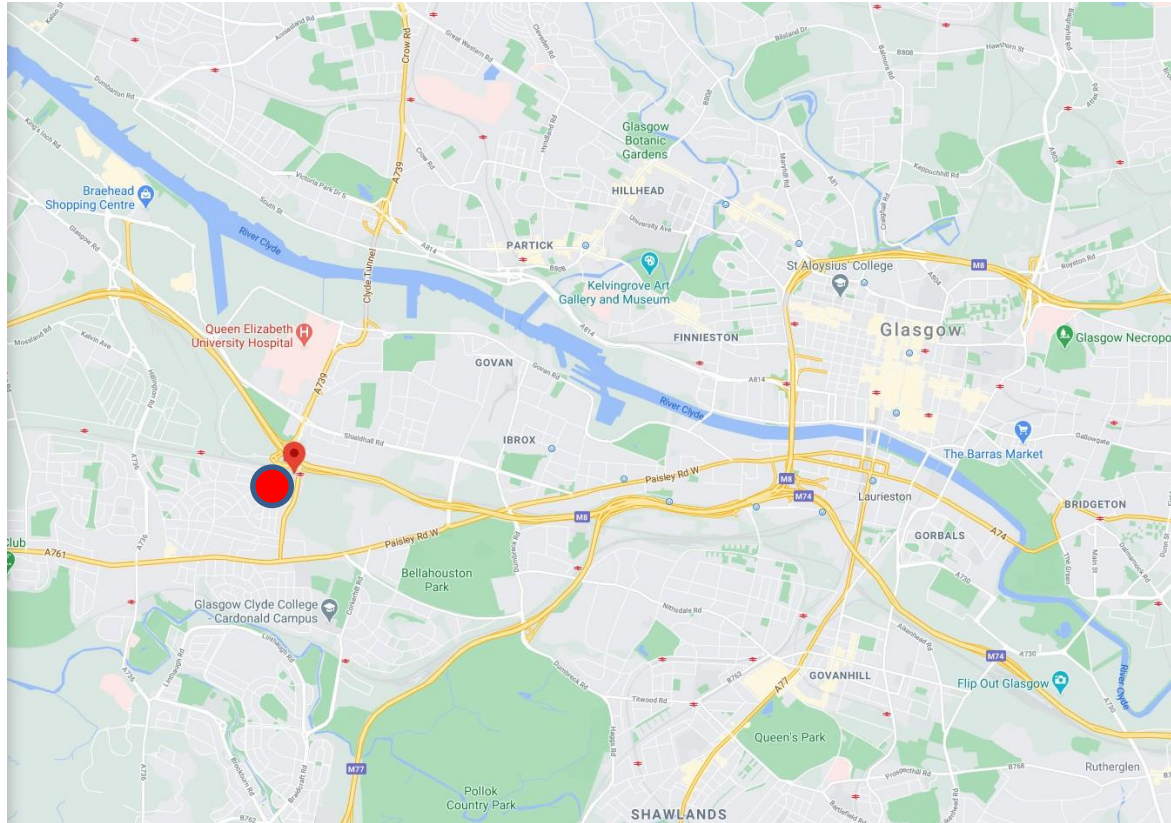
SWECO 



Queensland Gardens, Cardonald
Green Infrastructure Retrofit

*Southside Housing Association &
Glasgow City Council partnership*

Location



Context



How it is now....



The background



In the Clyde and Loch Lomond Local Flood Risk Management Plan area 21,000 residential properties are at risk of flooding



This flooding has the potential to cost approx. £67 million a year in damages (30% attributed to surface water)



Traditional drainage methods have limited capacity and do not provide multiple benefits.

In Hillington and Cardonald GCC have prepared a SWMP, where measures are being implemented to control runoff by mimicking nature. Queensland Gardens (owned by SHA) is one such location where these measures are being implemented

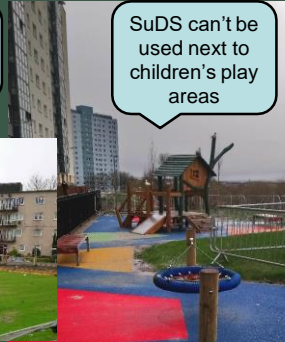
Images: SUSDRAIN
website: CIRIA

Common Misconceptions about using SuDS

SuDS can't be used as multifunctional open space



SuDS are ponds with deep water



SuDS can't be used next to children's play areas

SuDS take up a large amount of space,



SuDS require a large amount of maintenance



Why would a Housing Association help us manage flooding?

Provision of new multi-functional open space

Enhanced biodiversity

Properties are more resilient to climate change

Improved wellbeing/healthier communities

Reduced flood risk to residents

Greater access to new funding streams

Educational opportunities

Pooled resources/costs

Catalyst for economic growth & regeneration

Improved outdoor space and play areas

Community interaction/less isolation



*A delightful, fun,
biodiverse 'sponge'
landscape ?*

Have fun with
water, a natural
part of our lives
and landscape



Don't we all just
love looking at
water?



Gardens for people.
And pollinators. And
rain. And maybe
some food too...





Observed that there is a lot of space around the buildings but there is little "to do" in terms of activities

Memorial rose bush planted by local resident within the grounds should be incorporated within new proposals

Something for the kids

Temporary bike pump track proved popular with the kids on the day

Create attractive gardens that includes seating

Provide for all ages

Not much for The kids to do

Improve surface water management/flooding

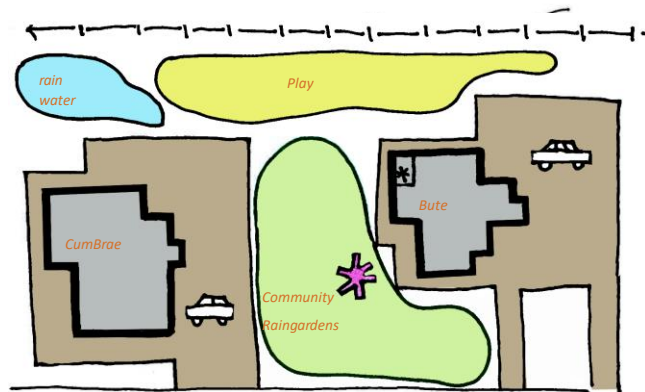
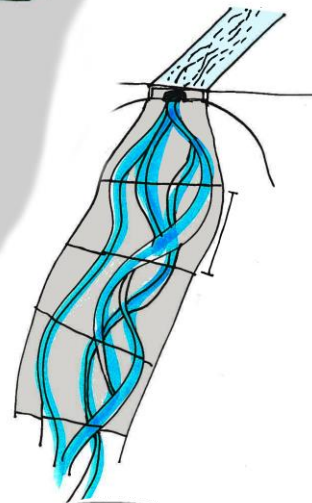
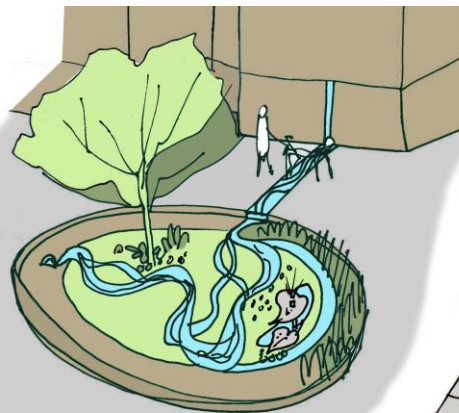
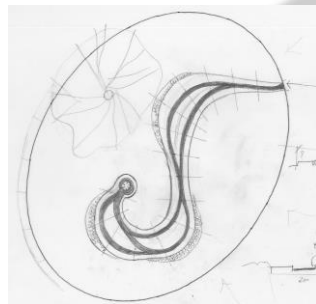
Concept



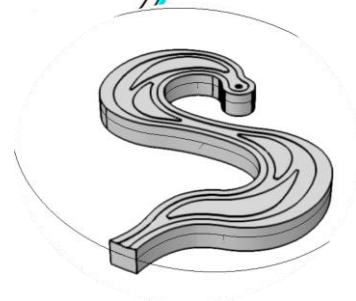




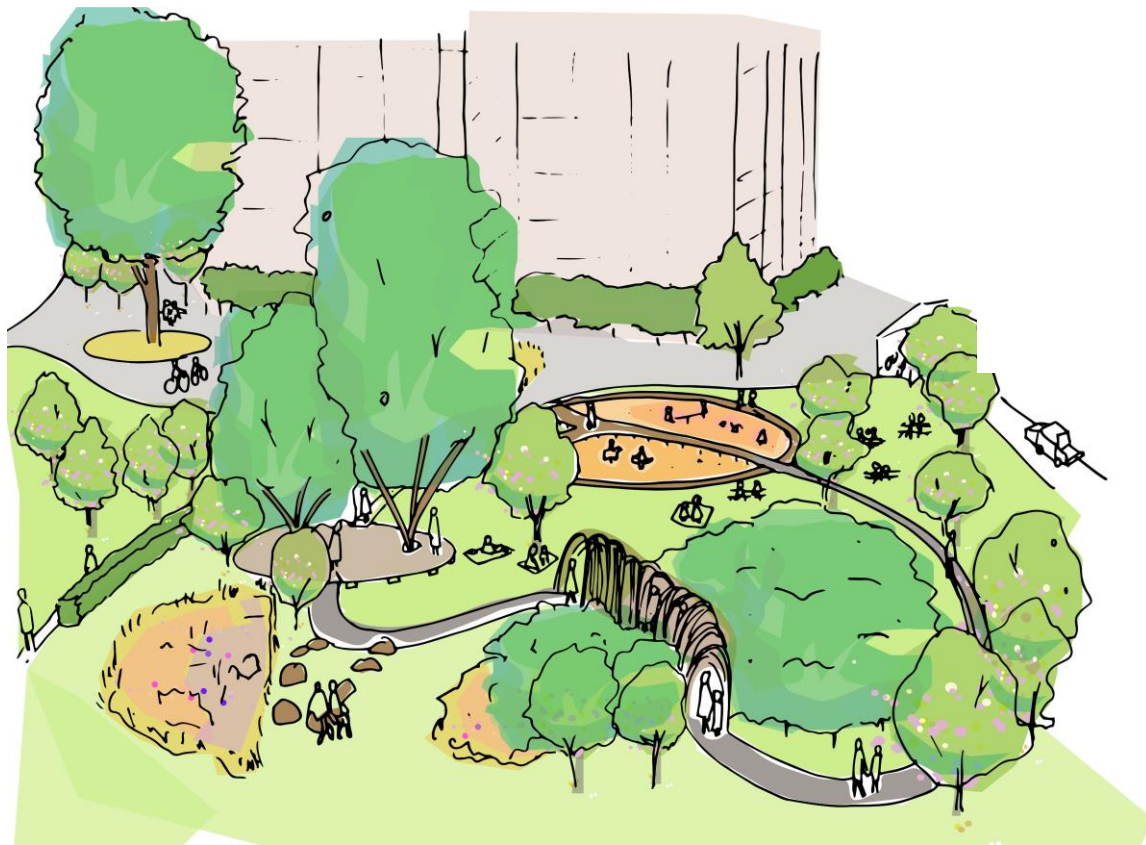
Water flow - Clay work by young person at
community consultation event



Queensland Drive













Architecture &
Design Scotland

Ailtearachd is Dealbhadh na h-Alba



Scottish Natural Heritage
Dualchas Nàdair na h-Alba
nature.scot



**The Scottish
Government**
Riaghaltas na h-Alba



GLASGOW
CITY REGION
City Deal



10,000
Raingardens
for Scotland

**Cycling
Scotland**